



# Network Cameras for Every System and Budget



Megapixel  
Cameras



Legend™ IP  
PTZ Cameras



CamPlus™ IP  
Dome Cameras



# Network Cameras

## A Family of Sophisticated Cameras that Meets Every Surveillance Need

### How is your IP Vision?

Whatever your field, being able to address security issues anytime, and from anywhere, makes you more productive and competitive. GE Security network cameras give you superb optical quality and full remote surveillance control.

GE Security IP camera systems provide effortless scalability, which yields a lower cost of ownership over time. View live, sharp, full-motion security images on your computer screen—locally or from anywhere in the world.

### CamPlus IP Camera

CamPlus IP dome cameras combine MPEG-4 compression with DSP technology for the perfect balance of image quality, file size and transfer speed (default = 1.2 MB/sec). Dual-streaming allows you to maximize storage and performance on networks with limited bandwidth. Power over Ethernet (PoE) capability makes the CamPlus IP easy to install, requiring only a CAT5e cable.

### Megapixel Camera

To meet critical surveillance demands, GE Security's 2 and 3 Megapixel cameras incorporate high resolution and wide-angle viewing. Rugged and compact, these PoE cameras deliver images over almost any network. The 3 Megapixel model can switch between full color and monochrome modes depending on lighting conditions.

### Legend IP PTZ Dome Camera

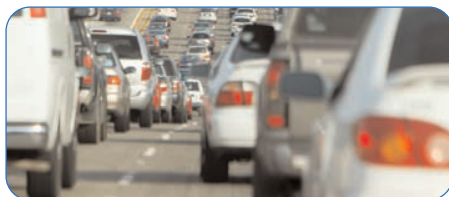
Like its groundbreaking Legend sibling, the Legend IP operates with smooth precision thanks to GE's exclusive SilkTrak™ direct drive. Other features include a 36x optical zoom camera, time schedule operations and e-mail notification of alarms or camera faults.

## Typical CamPlus IP and Megapixel Applications

CamPlus IP and Megapixel cameras bring advanced image quality to traditional video surveillance applications, such as transit, industry, financial institutions, casinos and retail.



Casinos



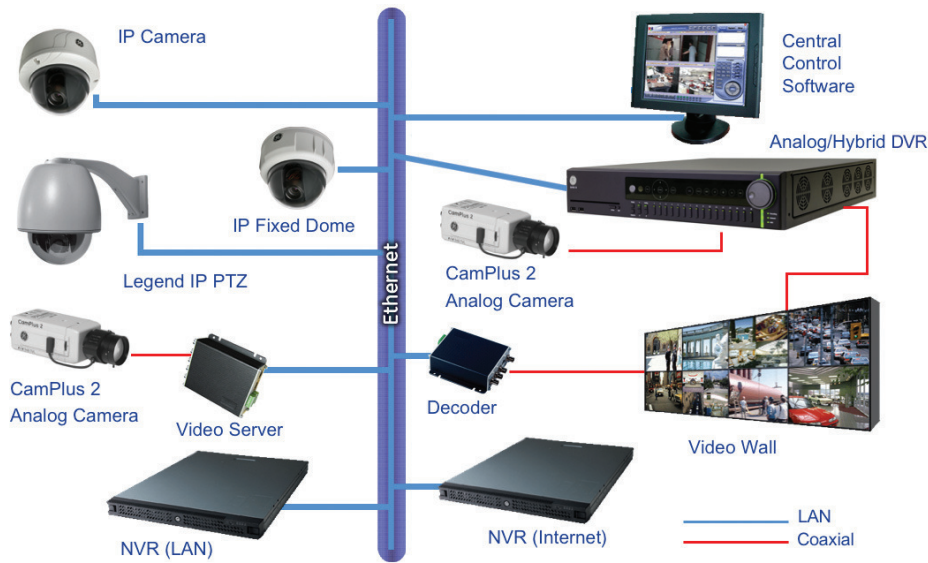
Traffic and Transit



Financial Institutions



## Custom IP Video System



## Open Architecture Creates Easy Integration Into Any System

Our goal is to make IP video surveillance systems easy, scalable and affordable. GE Security also features an open architecture that allows for easy integration of our DVRs, cameras and codec devices.

Our surveillance system works with Commercial-Off-The-Shelf (COTS) servers and storage to facilitate rapid retrieval of archived video.

## Typical Legend IP PTZ Applications

The Pan/Tilt/Zoom capabilities of the Legend IP make it ideal for schools, university campuses, hospitals, utility stations, airports and more.



Airports

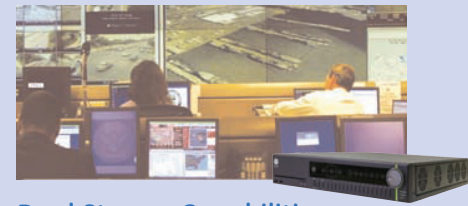


Utilities and Government Facilities

## Advanced Features for Enhanced Security

### Speed and Clarity

D1 compression resolution is the digital equivalent of NTSC, providing crisp clear images at fast transfer speeds.

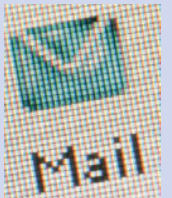


### Dual Stream Capabilities

Live streams can be sent simultaneously to separate recording and monitoring stations.

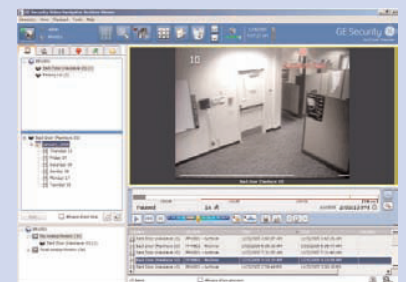
### Industry Standard Connectivity

Our cameras use Industry standard protocols like SMTP for sending notifications or images, and TCP/IP for broadband connectivity.



### Remote Access Made Easy

Our Video Management System (VMS) offerings allow for remote configuration, live video review and archived video review from any Web browser or client PC.



GE  
Security

Americas  
503-885-5700  
888-GE-SECURITY  
(437-3287)

Asia  
tel 852-2907-8108  
fax 852-2142-5063

Australia  
tel 61-3-9259-4700  
fax 61-3-9259-4799

Europe  
tel 32-2-725-11-20  
fax 32-2-721-40-47

Latin America  
tel 305-593-4301  
fax 305-593-4300

[www.gesecurity.com/video](http://www.gesecurity.com/video)

© 2007 General Electric Company  
All Rights Reserved.

## Uncompromising Quality and Unlimited Possibilities

GE network cameras are compatible with an array of DVRs and software options.



### Hybrid DVRs

Several GE network cameras are compatible with the digital inputs on our family of Hybrid Digital Video Recorders, including our SymDec™ 16 *plus* 4 and the SymSafe™ Recorders.



### Software

GE network cameras are supported by GE's video management software as well as additional integration through the Omnicast VMS.

## About GE's Security Business

GE Security, Inc., a wholly owned indirect subsidiary of the General Electric Company (NYSE: GE), is a leading supplier of security and life safety technologies, with operations in more than 35 countries and \$1.8 billion in annual revenue.

Leveraging a broad portfolio of advanced world-class technologies and best-in-class partners, GE delivers real-world, end-to-end security solutions that help protect people, assets and communities.

**For additional information, please visit us online at [www.gesecurity.com](http://www.gesecurity.com), or call 888-GE-SECURITY (437-3287).**

GE-Security, making the world safer.

GE Security products are available through a global network of Strategic Partners, Integrators, Dealers and Distributors.



imagination at work